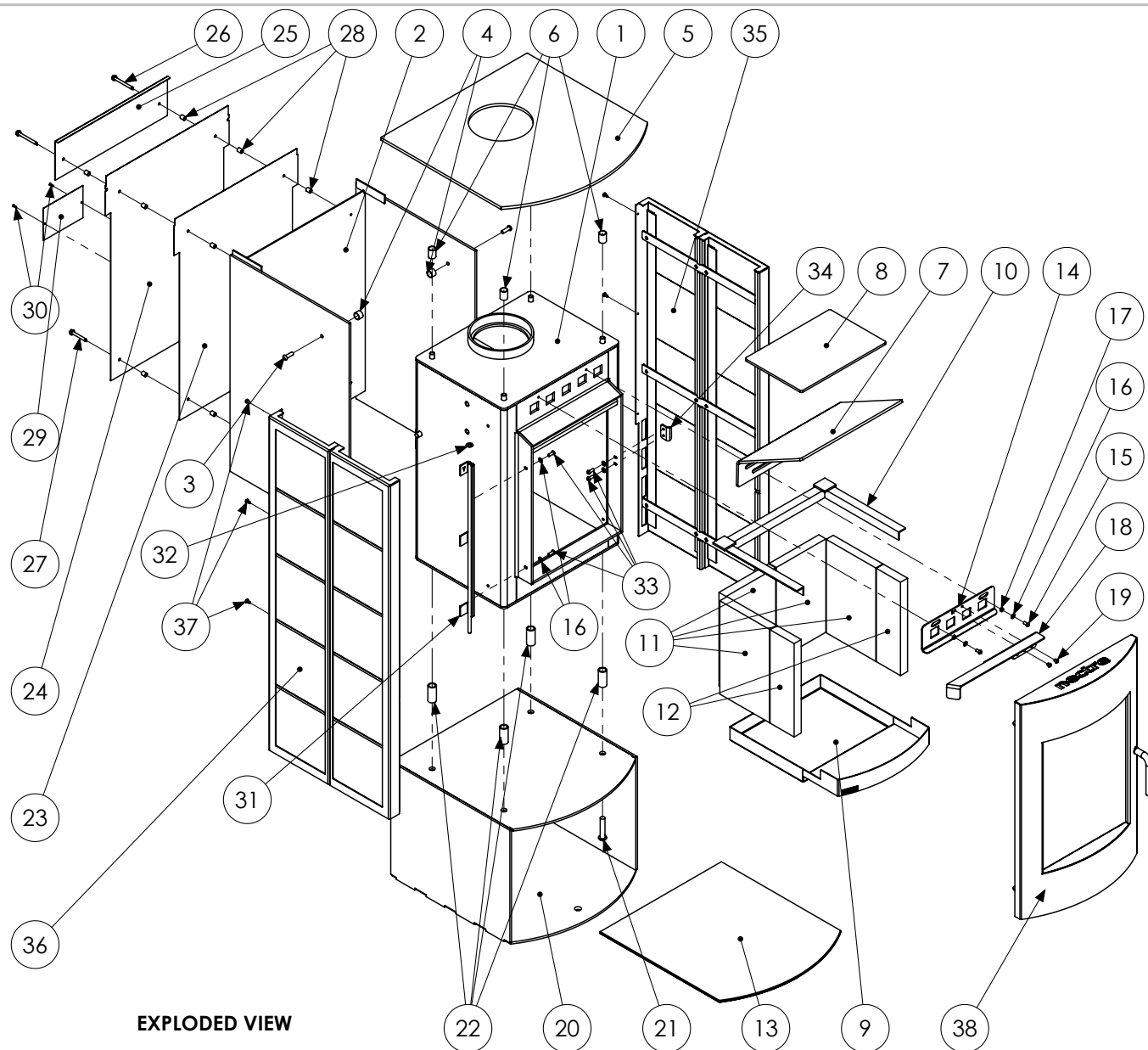


ITEM	PART NO	REV	DESCRIPTION	QTY.
1	N107-000	A	N60 Chassis	1
2	N107-055	A	N60 U-Section	1
3	N920-013		Button Head Socket Screw M8 X 25	4
4	N900-188	A	Spacer Stainless Steel OD19.05 x 13	4
5	N107-042	A	N60 Surround Top Tiled	1
6	N900-167	A	Spacer Stainless Steel OD19.05 x 25	4
7	N107-025	A	N60 Baffle Big	1
8	N107-026	A	N60 Baffle Small	1
9	N107-048	A	N60 Ash Tray	1
10	N107-024	A	N60 Brick Retainer	1
11	N900-178	A	Brick (285 x 175 x 25)	4
12	N900-179	A	Brick Cut Half (285 x 85 x 25)	2
13	N107-086	A	N60 Stand Glass	1
14	N107-069	A	N60 Air Slide	1
15	N920-010		Button Head Socket Screw M6 X 12	2
16	N920-073		Washer SS M6 X 12 X 1.2	6
17	N900-182	A	Air Slide Bush	2
18	N107-070	A	N60 Air Slide Handle	1
19	N920-008		Button Head Socket Screw M6 X 6	2
20	N107-030	A	N60 Stand	1
21	N920-068		Button Head Socket Screw M12 X 60	4
22	N900-189	A	Spacer Stainless Steel OD21.3 x 46	4
23	N107-051	A	N60 Shield Rear Inner	1
24	N107-020	A	N60 Shield Rear Outer	1
25	N107-053	A	N60 Shield Rear Top	1
26	N920-041		Hex Type 17 Screw 14-10x65	2
27	N920-040		Hex Type 17 Screw 14-10x50	2
28	N900-055	B	Spacer Aluminium OD10 x 12	10
29	N107-068	A	N60 Compliance Plate	1
30	N920-032		Blind Rivet 3.2x10 SS	2
31	N107-084	A	N60 Hinge Body Assembly	1
32	N920-007		Washer SS M8 x 17 x 1.2	1
33	N920-011		Button Head Socket Screw M6 X 16	4
34	N107-085	A	N60 Latch Tag	1
35	N107-102	A	N60 Tile Side Right	1
36	N107-103	A	N60 Tile Side Left	1
37	N920-018		Cross Recessed Pan Head Tapping Screws ST4.8 x 12	6
38	N107-076	B	N60 Door	1



EXPLODED VIEW

**Glen Dimplex
Australia**

5-7 Duncan Rd, Dry Creek, SA 5094
Ph: +61 8 8349 8332

Drawing Notes:
CD = Critical dimension

This work is protected by Copyright.

Part No N107-002 Rev B Description N60 Heater Tiled



Tolerances: +/-1mm (unless specified)

All dimensions are in mm

DO NOT SCALE DRAWING

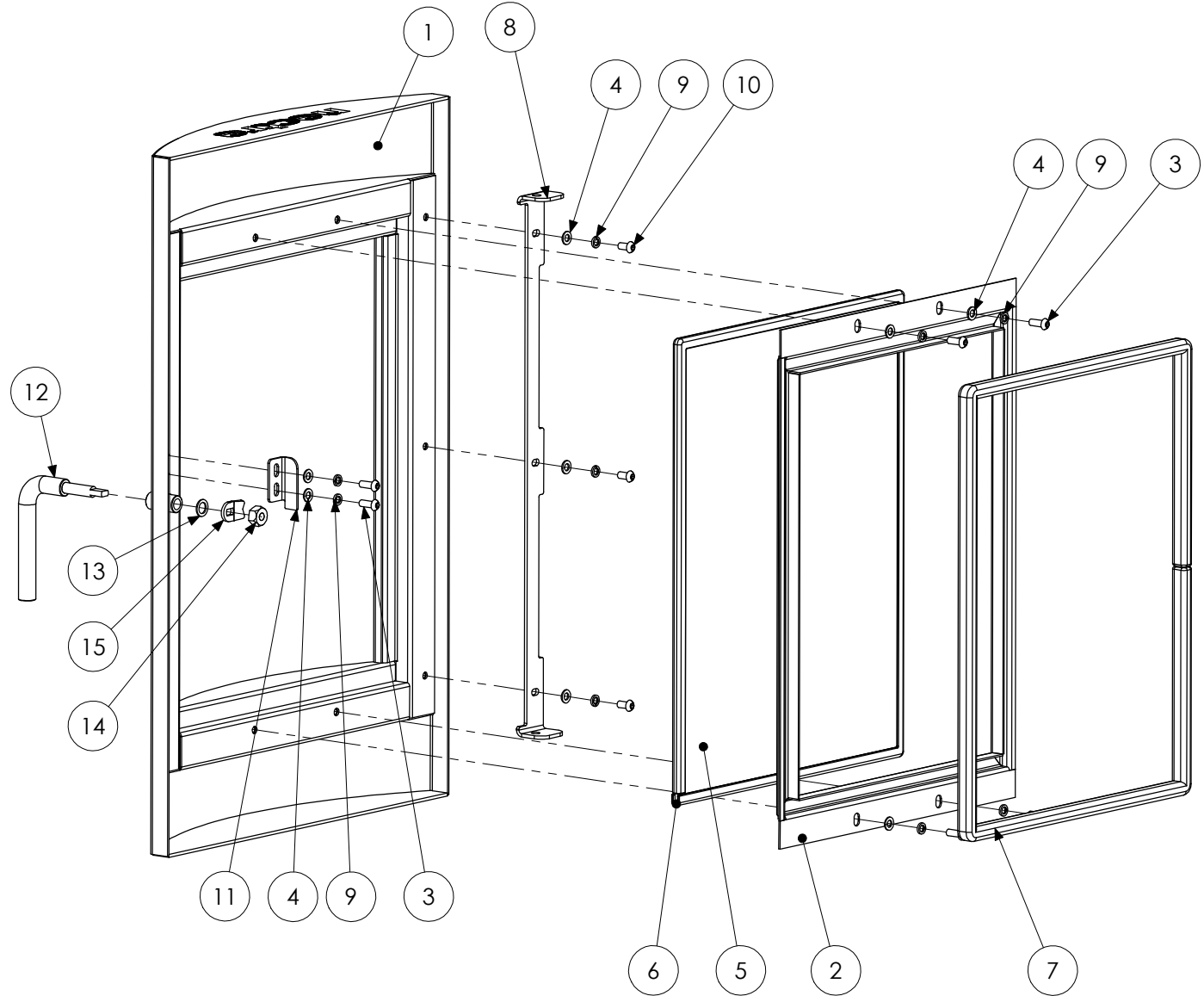
Scale: 1:16

A4

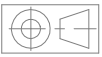
Sheet

2 of 8

ITEM	PART NO	REV	DESCRIPTION	QTY.
1	N107-059	A	N60 Door Surround Assembly	1
2	N107-075	A	N60 Glass Clamp Assembly	1
3	N920-011		Button Head Socket Screw M6 X 16	6
4	N920-073		Washer SS M6 X 12 X 1.2	9
5	N107-077	A	N60 Glass	1
6	N107-078	A	N60 Glass Seal	1
7	N107-079	A	N60 Fibreglass Rope	1
8	N107-052	A	N60 Hinge Door Bracket	1
9	N920-074		Washer Spring M6	9
10	N920-010		Button Head Socket Screw M6 X 12	3
11	N107-080	A	N60 Door Handle Stopper	1
12	N900-183	A	Door Handle Rod Brushed Stainless	1
13	N920-075		Washer SS M10 x 16 x 1.2	1
14	N920-027		Hexagon Nut Prevailing Torque M10	1
15	N107-110	A	N60 Door Latch	1



EXPLODED VIEW

Glen Dimplex Australia 5-7 Duncan Rd, Dry Creek, SA 5094 Ph: +61 8 8349 8332		Drawing Notes: *CD* = Critical dimension This work is protected by Copyright.	Part No	Rev	Description
			N107-076	B	N60 Door
			 Tolerances: ±1mm (unless specified) All dimensions are in mm Scale: 1:6		
			DO NOT SCALE DRAWING A4 Sheet 2 of 4		